

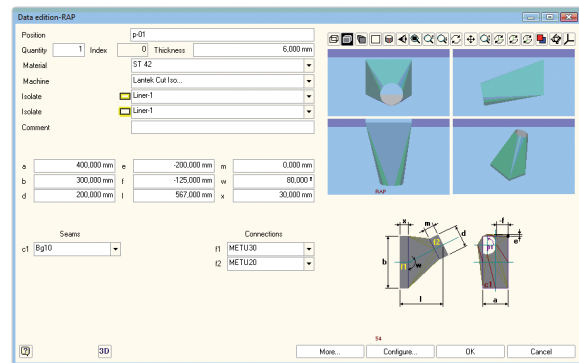


Introduction

Lantek Expert Duct is a powerful module for calculating HVAC and DUCT figures. It is the result of over 25 years experience and close collaboration with both manufacturers and users of sheet metal cutting and punching machines. It perfectly combines machine technology with the customer's programming and management needs.

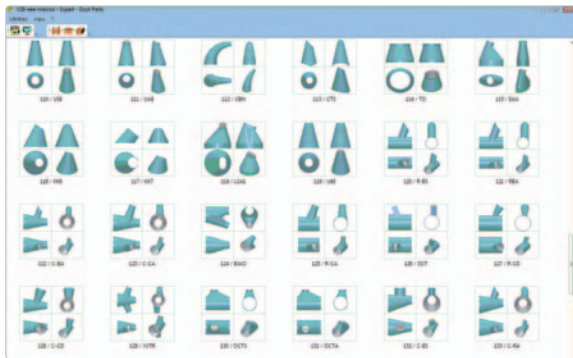
Lantek Expert Duct is designed in such a way that the user only has to follow the simple steps prompted by the system. Users simply have to select the figure to be developed, enter the required dimensions, and the figure will automatically be developed. It includes a complete library of parametric figures which also follow DIN and SMACNA regulations (square to round, cones, cylinders, boiler making figures, tube intersections, etc.) to cover most of the duct shapes available.

- Time and true costs calculation. **Lantek Expert** calculates the weight, the cutting perimeters and the material costs.
- Easy to use. The user only needs to select the figure and enter the data for the system to automatically develop the part. For faster production there is also a figures editor. It allows visualization in 3D to verify the final result of the part.



Technical characteristics

- Extended library of parametric parts and HVAC figures.



- 2D design. **Lantek Expert Duct** integrates a 2D CAD module to design any part, as well as any geometric modification of the contours. The flat pattern can then be cut or punched in **Lantek Expert** and considers flanges, notches and bend lines for marking...
- Warehouses management. All the parts are stored in organized databases.
- Intelligent import/export. Connection to the principal CAD systems on the market: DXF, DWG, IGES, etc.

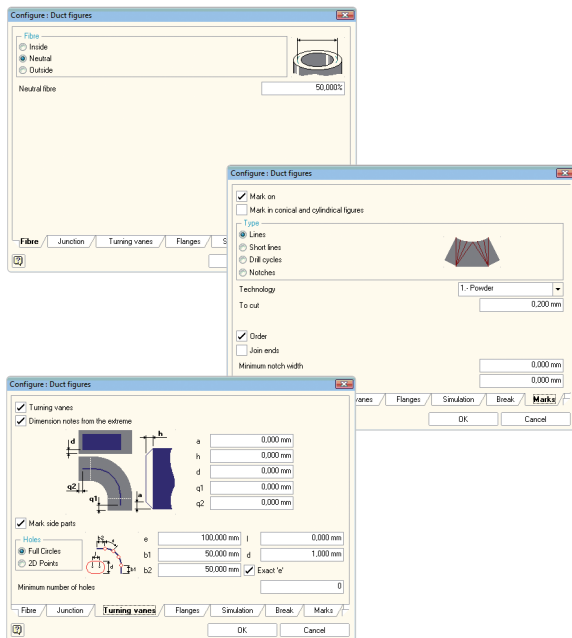
- Integration of all options. **Lantek Expert Duct** is fully integrated with the other modules of the **Lantek Expert** family in a single program. So, any modification in the part will be achieved from the same program without affecting the nesting or the cutting sequence. Moreover, **Lantek Expert** is fully integrated with the Integra Management Software System. **Lantek Integra**, offers CAD/CAM/ERP solutions for manufacturing companies belonging to the sheet metal, beam section and tubes processing sector. Additionally, **Lantek Expert** is designed to connect to an external ERP.



Configurability

Lantek Expert Duct is a system which takes into account duct requirements. The user can define the following options:

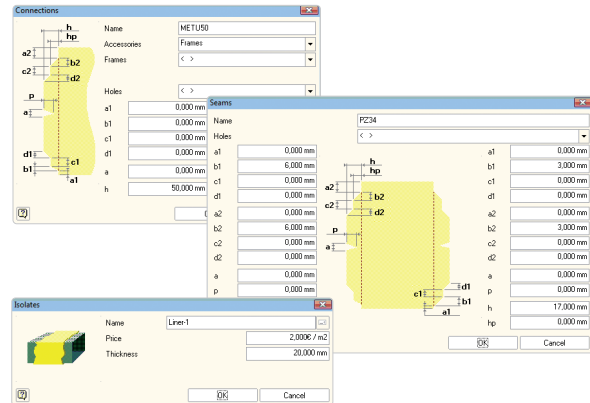
- Type of neutral axis (internal, neutral, external) with which we make the calculations.
- Type of joints used for the parts.
- Number of sections.
- Type of engraving (lines, notches, drilling, etc.) for cutting machines.
- Seams, connections, etc.
- Insulators.



High definition HVAC and duct figures

Lantek Expert Duct adapts perfectly to the air conditioning and ventilation industry. The user can define the following options:

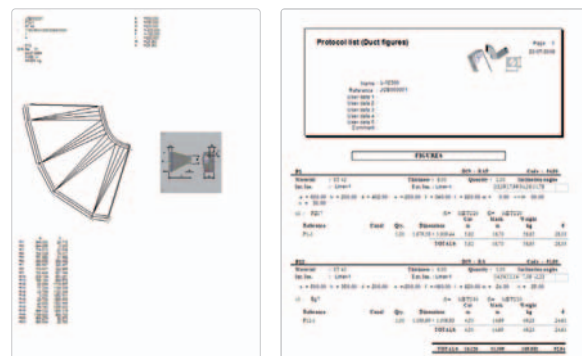
- Baffle plates. Can be generated configuring the necessary parameters in order to generate the sheets, plates.
- Library of seams, connections, flanges, etc. The user can easily define these elements graphically.
- Etc.



Listings

The system generates listings such as:

- Listing scale 1: 1 in order to cut directly the part from the sheet.
- Geometrical listing for the development of essential points.
- Design of important shapes page by page.
- Listing of all parts.
- Listing of tags.
- Listing of macros, insulators, etc. to
- Etc.



Din regulation

The figures are using DIN standard 18.379 and SMACNA. Therefore we guarantee the fulfillment of the European building and construction regulations. We also generate documentation and information in line with above regulations.